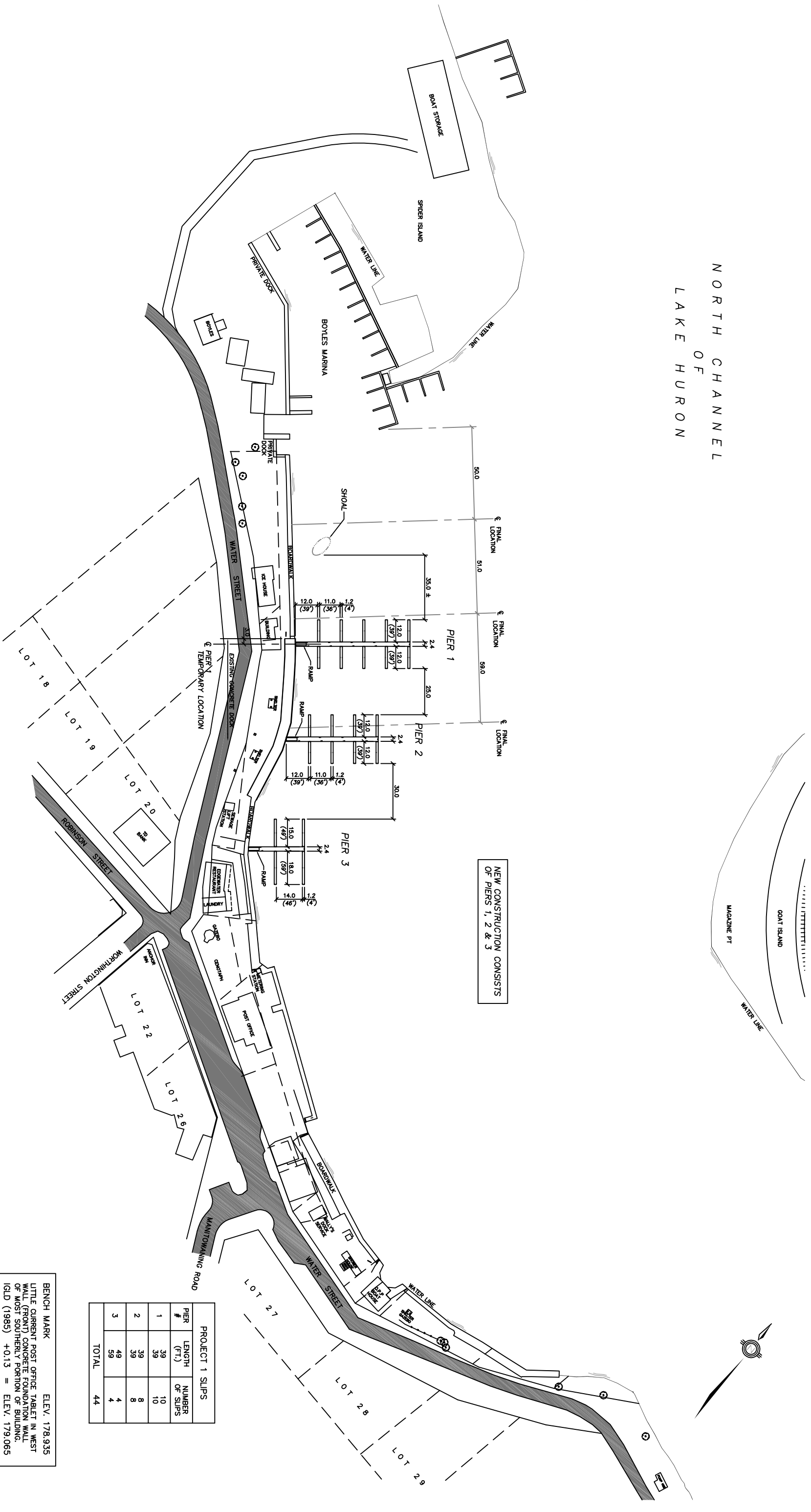


NORTH CHANNEL
OF
LAKE HURON



NEW CONSTRUCTION CONSISTS OF PIERS 1, 2 & 3

PROJECT 1 SLIPS		
PIER #	LENGTH (FT.)	NUMBER OF SLIPS
1	39	10
2	39	8
3	49	4
TOTAL		44

BENCH MARK ELEV. 178.935
LITTLE CURRENT POST OFFICE TABLET IN WEST WALL (FRONT) CONCRETE FOUNDATION WALL OF MOST SOUTHERLY PORTION OF BUILDING.
IGLD (1985) +0.13 = ELEV. 179.065

REVISIONS

DATE	DETAILS	BY

CAUTION

- ALL UTILITIES ARE NOT NECESSARILY SHOWN ON THIS DRAWING.
- WHERE UTILITIES ARE SHOWN, LOCATIONS ARE NOT GUARANTEED
- LOCATION & SIZE OF ALL UTILITIES MUST BE VERIFIED IN THE FIELD.



northland engineering (1987) limited
Consulting Engineers and Planners
NORTH BAY



Project:

The Town of
NORTHEASTERN MANTOULIN
and the ISLANDS

Drawing:

CONTRACT 1 - WEST FLOATING DOCKS
SITE PLAN - TEMPORARY LOCATION

Drawn by: N.E.L.

Checked by: T.H.

SU-3596

Date: JAN 20/06

Scale: 1 : 1000

Drawing No.: 1 of 5